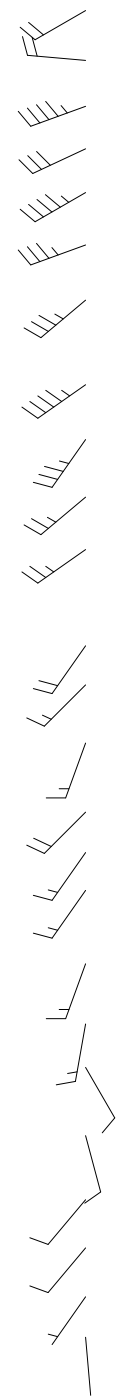
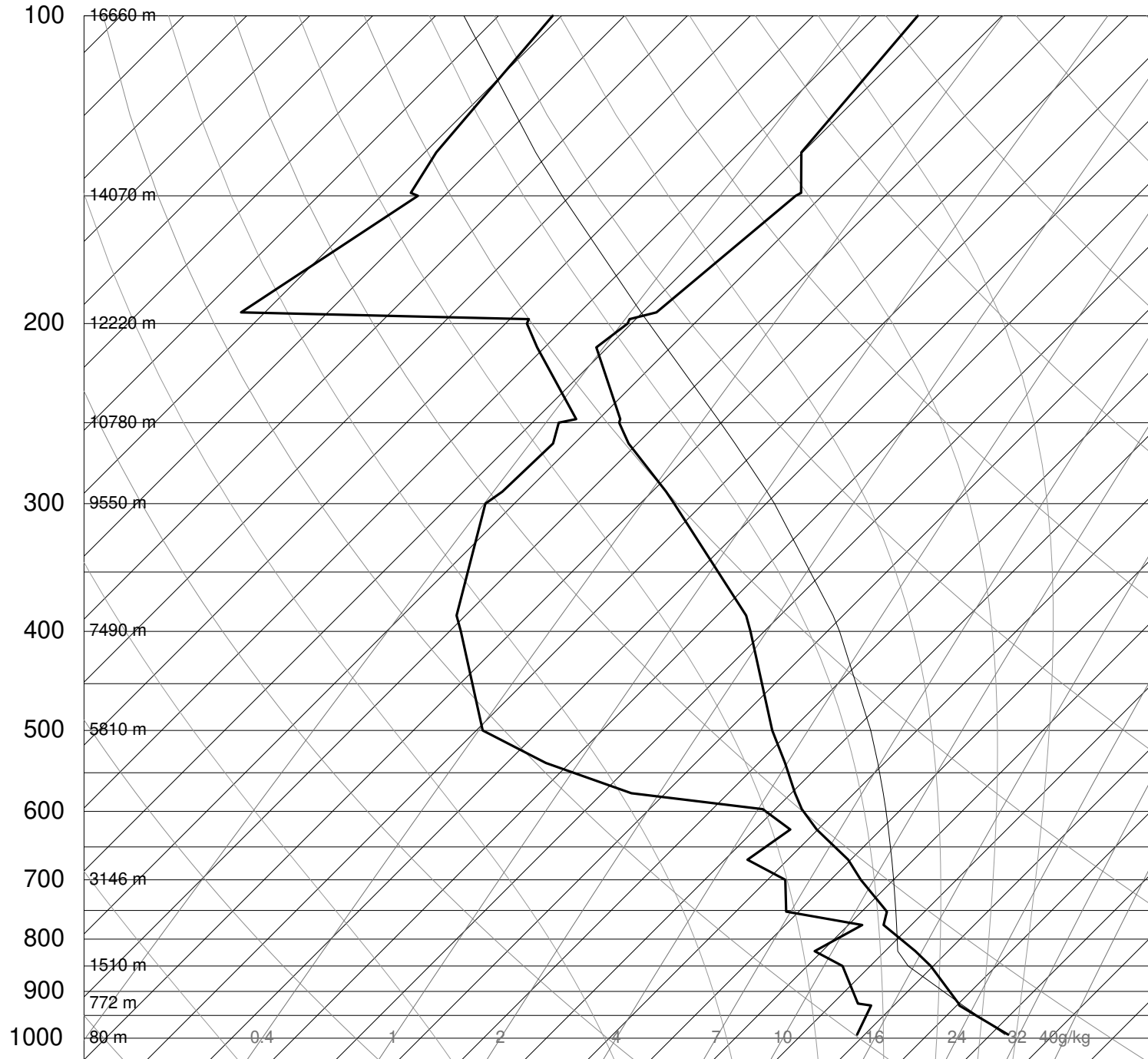


10410 EDZE Essen



SLAT	51.40
SLON	6.97
SELV	147.0
SHOW	-4.79
LIFT	-7.86
LFTV	-8.76
SWET	316.6
KINX	38.10
CTOT	24.30
VTOT	31.30
TOTL	55.60
CAPE	2551.
CAPV	2742.
CINS	-44.9
CINV	-23.3
EQLV	196.4
EQTV	196.4
LFCT	794.6
LFCV	808.9
BRCH	527.8
BRCV	567.3
LCLT	289.7
LCLP	835.6
LCLE	348.3
MLTH	305.0
MLMR	14.45
THCK	5730.
PWAT	39.35

12Z 13 Aug 2024

University of Wyoming